

Bawkbawn chin leh enkawl dan

Scientific name : *Solanum melongena*
Hindi : Baigon
Mizo : Bawkbawn
English : Brinjal

Sik leh sa :

- Boruak lum leh hnawngah a tha duh hle
- Ram vawtah leh vur tlakna hmunah a tha thei lo
- A than chhungin boruak lum lutuk lo leh vawt lutuk lo a mamawh
- Khawlum lam 20^oC - 30^oC ah a tha duh
- Zan lam boruak vawt lutuk a chhiatpui fo

Leilung mamawh zawng:

- Lei dur tha tak tui pai tam mahse in thlihul hma si(sandy loam soil) ah a tha duh ber
- Lei thur lam pH 5.5. – 6.6

Leitha (fertilizer) mamawh zat : Leitha mamawh zat hi lei that leh that loh dan a zirin a danglam hret thei a, chumi mil chuan her rem tur a ni.

- Bawngkek ro tha leh tawih tha : 25-30t/ha
- N :- 100 – 120kg/ha
- P :- 75 – 85 kg/ha
- K :- 45 – 50 kg/ha
- A theih chuan boron pek tel tur @ 20-25kg/ha
-

A kar hlat zawng : 60cm x 45cm , 60cm x 60cm, 75cm x 60cm, 75cm x 75cm
A thang duang chi leh thar tlai chi chu a inkar hlat deuhah phun tur

A chi mamawh zat : Hectare khat atan 200g a tawk

A chin hun

Favang bawkbawn :- August - September
Nipui thlai bawkbawn :- June – July
Tlangram/Thingtlang :- March – April

A phunsawn hun

Favang bawkbawn :- kar 6-8 hnuah a phunsawn theih
Nipui thlai bawkbawn :- kar 4 hnuah a phunsawn theih

- Bawkbawn hi thlai damrei tak a ni a, lei thatna hmunah chuan hun rei tak chhung tam tak takin a thar theih a ni.

- Natna laka fihlim lo leh fere deuh leh upa tawh chu phunsawn loh tur.
- A tiak hrisei tha leh than duang tha deuh phunsawn tur a ni.

Enkawl zui dan :

- Bawkbawn hi a than muan avangin a bul velah hnim thlawhfai ngun tur
- A thlai bulhnai tak chu thlawh fail oh tur a zung tihchhiat a awl
- A len hnuah a bul rihfai tur a ni.
- A kung bulhnai tak thlawh loh tur, a zung tih chhiat loh tur
- A zam kannu siam sak tur
- A kung hnuai lama peng te paih a tha
- A rah ni sa lutuk hem tir loh tur

A lawh hun :

- A chan hma, a no lai ngei a lawh tur
- Lawh hunah pawt bal mai lovin chemte hriam takin a rah kungah zai chhum tur
- A kung tihpem tell oh tur a ni ang.

Thar zat :

A hma chi :- 25 – 30t/ha
 Hybrid :- 35 -50t/ha

Seng hnua a rah sawngbawl dan:

Bawkbawn rah chu lawh zawh veleh tuia puh huh tur a ni a, bazar hnai deuhva hralh turin tuia puh zawhah chuan pate-ah emaw lekhkhawng bawmah khung that tur a ni. Boruak pangngaiha chuan bawkbawn hi a dahthat rei vak theih loh. Thlasik lai chuan ni 2-3 vel a dah that theih a, nipui lai erawh chuan ni hnih khat hnuah a chuan a vuai chhe mai thin. Amaherawhchu boruak 10-11OC leh boruak hnawn lam 92% ah chuan kar hnih thum chung vel lai a dah that theih a ni. Boruak ro lutukah chuan a sawng chak hle a, a lan dan a itawm lohvin leh chhum pawhin a hmin har deuhin a thar a tluk tawh thin lo. Room temperature chungga Polythene bag tih kuak deuh chuk a dah hian bawkbawn hi bawm chhin neilo leh tuam loah dah ai chuan a tha rei zawk a ni.



Pusa Purple Long

Pusa Purple Round

Bawkbawn eichhetu rannung leh a natna-te:

Hadda beetle:

Hadda beetle puitling tawh chu a buang dang deuh, a hnung lama spot dum awm thet a ni a, a puitlin hma, vual ang deuha a awm lai chuan a rawng a eng thin a ni.



tui chu churut(meizial) ang deuh a ni a, a rawng a eng a, a tui khawm thin a, hmunkhatah a awm tuar zel a ni. A note leh a puitling hian a hnah hi an ei pilh nung thin a, a hring lai zawng a zawh hnuah a, a hnah chu a ruhrel chauh bangin an zuah thin.

Aphids: Aphid hi fanghmir tui ang deuh a, rannung te tak te te var ang hi a ni a, a note leh a puitling chuan a hnah a tuihnang a zuk a, a zuk tawh chu a rawng a lo eng a, a lo piangsualin a ro chhe vat thin. Aphid hian bawkbawn hnahah thil thlum a siam chhuak, chu thil thlumah chuan ting ek ang thil dum a lo insiam a, chu chuan a hnah chu ni eng hmu tha thei lovin a siam, a hnah atang chaw siam a ti thuanawp thin.

A kuang leh a rah nget(Shoot & fruit borer): vual a nih lai chuan a kung a kher a, a thanna lai tak chu a ei chhe thin. A ei chhiat tawh hi chu a kung a lo vuaiin, a thle deuh hnup bawk thin. A hnu deuh chuan a rah a ei chhia a, mihring ei tlak loh hialin a ei chhe thin.



Red spider mite: vual a nih lai leh a puitling hma deuh leh a puitlin thlengin a hnah hnuai a ei chhe thin a, a ei chhiat tawh chu a lo a khawr tial tial a, a tawpah chuan a sawng vek thin.

Phomopsis blight and fruit rot: a hnah ah chuan he natna hi a a bial in a rawn duk thluk thluk thin. A hnuah chuan a rah chu rawng dal deuhvin a rawn khuar thin, he khuar hi a rawn lian tulh tulh a, a rah pumpui chu a lo duk chhuak vek a, a rah chung chu a lo tawih thin.



Little leaf: He natna hriat theih dan awlsam ber chu a hnah a lo te bik a, a hnah kuang a tawi bik a, a kung chang a lo zing bawk a, tin a hnah chu a sei deuh zet bawk a, a lo nemin, a mam deuh pur a. A kung pumpui chu thang tha lovin a buk thin, hei bakah hian a rah tlem thei hle.

Sclerotinia blight: a zar chu a chunglam atangin a lo vuai tan a, a kung pui a khawih chhe vat thin. He natna hi a nasat viau chuan hmuarin a zar penna bulah a rawn bawm z, a tawpah chuan a kung pumpui a lo vuai vek thin.

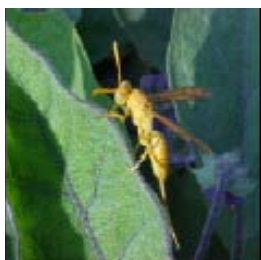
Root-knot nematode: he natna hriat awlsam theihna ber chu a zunga bawk a lo awm hian ani a. A kung a thang tha thei lova, a chinna a he natna a luh tawh chuan, huan pumpuia bawkbawn chu a thang tha theilo vek thin



Integrated Pest Management Strategies

Kui tiah laia hriattur:

- A tiak tir lawng tur venna atan nursesey bed chu lei atanga 10cm a sangah tui a luan hul zung zung theihna turin siam ngei ngei thin tur a ni. A chi kuina tui lei chu thlai chi thlak hmain lei a natna awm thei laka veng turin 10% formaldehyde a leih tur a ni a, hei hian a vuai natna leh a zung bawk lakahte a veng thei dawn a ni.
- A chungsa sawi anga kan tih hian, hriatreng tur chu, nisa a natna hrikte pho hlum anih theih nan lei chu a hnawng tha ngei ngei tur a ni.
- Hmuar natna lampang veng turin *Trichoderma viride* 250gm chu FYM 3kg nen chawhpawlh a, he *Trichoderma viride* hi a lo pun theih nan ni 7 chhung dah vang vang tur a ni. Ni 7 hnuah chuan 3sqm a zau nursery bed ah chawhpawlh tur ani.
- A chi tuh/theh hmain a chi chu *T. viride* @ 4 gm/ kg a sawngbawl tur a ni. hnim awm miah lo tura thlawh fai reng tur, a tiak natna kai chu paih chhuah nghal tur a ni.



Natural enemies

(Rannung tangkaite)

A phunsawn hnua enkawl dan:

- Rannung eichhetu sava awlsam taka a fuk theih nan Sava fukna tur tin khat hmun zelah 10 tal siam a tha
- Rannung (hoppers, aphids and white fly etc.) manna tur thil ban (Delta and yellow sticky traps) 2-3tal tin khat hmunah dah tel tur.
- Neem oil (2%) a kah hian a nget tlem azawng a veng thei a, a veng zo lo anih imidacloprid 17.8 SL @ 150 ml/ha a kah mai tur a ni.
- Rannung (akung leh a rah nget) manna tur Pheromone traps @ 5/ acre dah tur ani, tin, a chawchah hi ni 15-20 dan zelah thlak thin tur ani.
- Rannung tui ei zotu *T. brasiliensis* @ 1 – 1.5 lakh/ ha chu a kung leh a rah nget venna atang vawi 4-5 vel kar khat danah chhuah tur a ni.
- Phun atanga ni 25 leh ni 60-naah neem cake @ 250 kg/ ha chu vawi hnih pek a hmangin pek tur a ni. Hei hian a zung bawk leh a nget a veng dawn a ni. khawlum lam 30⁰C aia a san lai leh thli a tleh nasat lai chuan neem cake hi pek loh tur ani.
- A ngetin a tichhiat tawh chu paih a, a rah chhiate khawm a paih bo hian a net leh a tawih tur a veng.
- Nget hi a nasat a 5% aia tam a nget chuan , cypermethrin 25 EC @ 200 g a.i/ha (0.005%) or carbaryl 50 WP @ 3 g/litre of water or endosulfan 35 EC @ 0.07% a kah tur a ni.
- A zawn zata bawkbawn chin char char hian a vuai natna leh a nget a tam duh a; churang chuan solanaaceae family(samtawk, tomato, bawkbawn, alu etc) ami thlai nilo, thlai chi dang a phun thlak tur a ni.
- A khat tawkin rannung tui, vual leh panngang; bawkbawn eichhetu rannungte chu vai zeuh zeuh a, paih bo thin tur a ni.
- A hnah te natna(little leaf) vei ho kha a khat tawk a vai zeuh zeuh a, paih chhuah thin tur a ni. Green manure hmante, polythene-a khuhhnawnte, bleachin powder a lei sawngbawlte hian a vuai natna(bacterial wilt) lakah a veng thei a ni.

Table: Cost of cultivation of Brinjal

Sl. No.	Agronomic Practices	Amount/Number	Rate/Unit (Rs.)	Total Cost (Rs.)
1	Land Preparation	4 ploughings	1500/ha	6000.00
2	FYM	25 tonnes	600/t	15000.00
	Amount of FYM	15 mandays	130/manday	1950.00
	Scattering of FYM & initial dose of fertilizer	Once	1500/ha	1500.00
	Mixing of FYM with Cultivator			
3	Nursery Preparation Cost of seed	250 grams	200/100 g.	500.00
	Nursery sowing & management	6 mandays	130/manday	780.00
4	Transplanting	40 mandays	130/manday	5200.00
5	Irrigation			5000
6	Intercultural operations	50 mandays	130/ mandays	6500.00
7	Cost of Fertilizers			
	Urea	195kg	Rs4.83/kg	942.00
	DAP	174kg	Rs 9.35/kg	1627.00
	MOP	84kg	Rs4.26/kg	358.00
8	Plant Protection Measures	-	-	6000.00
9	Cost of Harvesting & Marketing			
	Harvesting	25 mandays	130/ mandays	3250.00
	Cleaning, grading & Packing	6 mandays	130/ mandays	780.00
	Packing material	Baskets, crates, gunny bags etc. 250q.	25/q.	2000.00 7500.00
10	Transportation charges			5000.00
11	Miscellaneous			5000.00
12	Total			74887.00
13	Interest on working capital @ 12% p.a. for 6 months			4493.00
14	Total cost of Cultivation			79380.00
15	Gross Returns (Rs./ha.)	250q	800/q	200000.00
16	Net Returns (Rs./ha.)			120620

17	Benefit-Cost Ratio			1.52
----	---------------------------	--	--	-------------